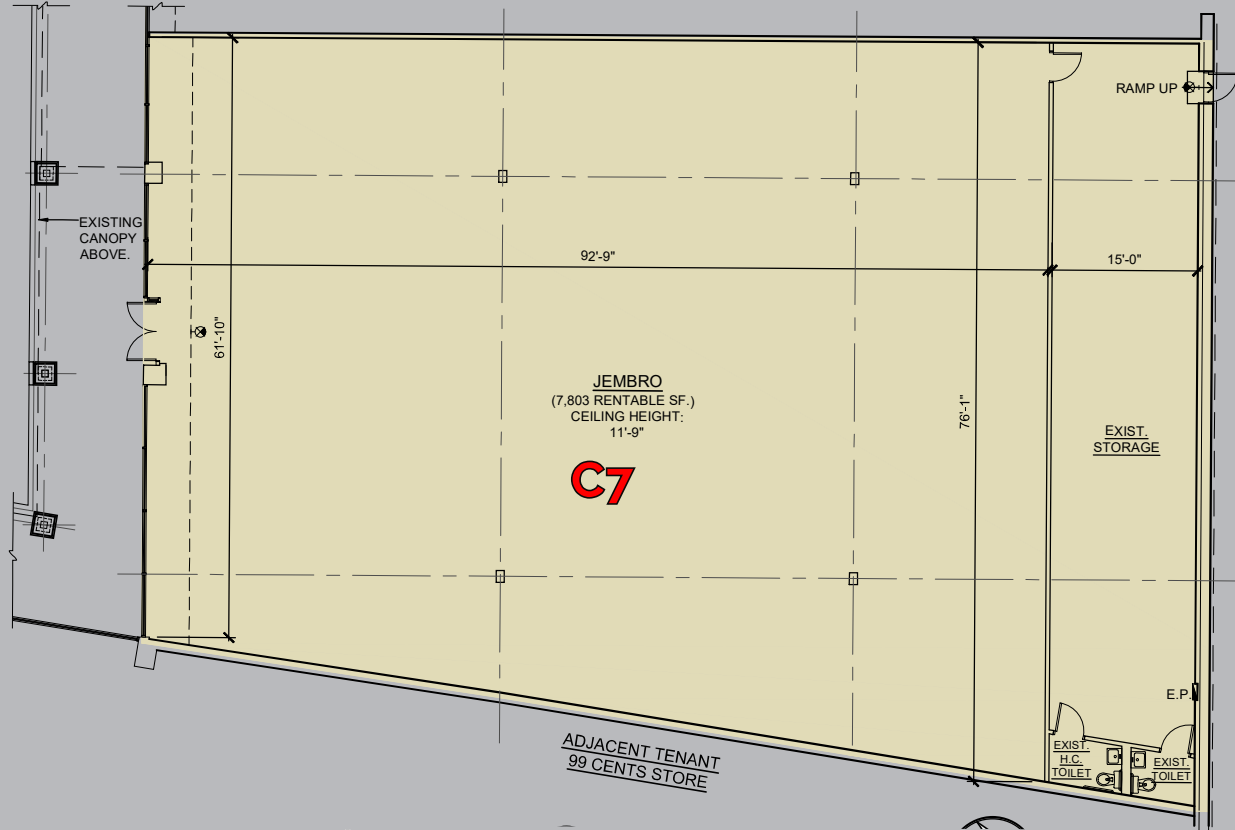


Staten Island, NY - 965 Richmond Avenue  
 Forest Promenade Shopping Center  
 Available: 2,156 s.f. & 7,803 s.f. - 19,724 s.f.

**STATEN ISLAND, NEW YORK**  
 965 Richmond Avenue  
 Available: 2,156 s.f. & 7,803 s.f. - 19,724 s.f.



**AVAILABLE: Space C7 - 7,803 S.F. Presently JEMBRO & Space C6 can be combined for a total of 19,724 s.f.**



Tenant	SF
ShopRite	61,063
B1 Liquor Store	8,358
<b>B2 AVAILABLE</b>	<b>2,156</b>
B3 Akira Ramen	1,950
B4 Cigar Shop	1,625
B5 Boost Mobile	1,040
B6 FedEx	2,676
B7 Fidelis Care	1,354
B8 Paris Baquette	3,250
B9 UFT	2,600
C1 Pizzeria	1,724
C2 MCU	2,056
C3 Forest Avenue Menswear	2,850
C4 Game Stop	1,500
C5 Wing Stop	1,456
<b>C6 AVAILABLE</b>	<b>11,921</b>
<b>C7 AVAILABLE</b>	<b>7,803</b>
C8 K Pot Korean BBQ	6,050
C9 Snipes	4,000



- RENOVATED SHOPPING CENTER!**
- New facade, sidewalks, parking, pylons & landscaping!
  - TRIPLE A LOCATION
  - Access from two of three biggest shopping streets on Staten Island! At the corner of Richmond & Forest Avenues, with exit onto Highway 440.
  - Excellent anchor - one of the highest grossing super-markets in all the boroughs! Join ShopRite, Wing Stop, K Pot Korean BBQ, Suits, Game Stop, Snipes, & Boost Mobile.
  - 500 + car Parking



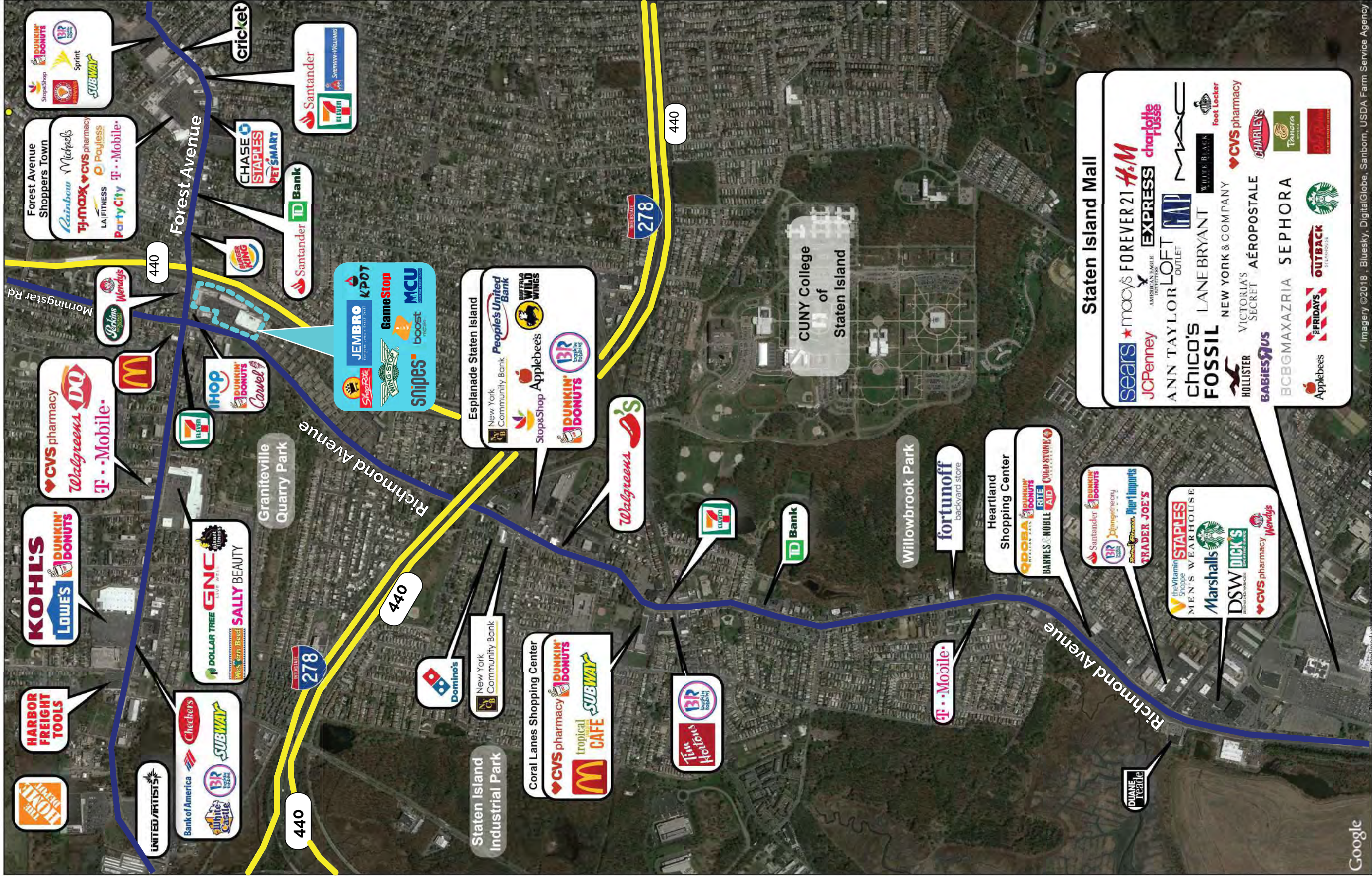
Available: B2 - 2,156 s.f.  
 C6 - 11,921 s.f.  
 C7 - 7,803 s.f.

Spaces C6 & C7 can be combined for a total of 19,724 s.f.

**JOIN THESE NEIGHBORING RETAILERS:**



FOREST PROMENADE



**Staten Island Mall**

- sears
- macy's
- FOREVER 21
- H&M
- JCPenney
- EXPRESS
- charlotte russe
- MACYS
- ANN TAYLOR LOFT OUTLET
- LANE BRYANT
- WHITE BLACK
- foot Locker
- CVS pharmacy
- CHARLEYS
- Panera
- CHICO'S
- FOSSIL
- NEW YORK & COMPANY
- VICTORIA'S SECRET
- AÉROPOSTALE
- HOLLISTER
- BABIES'RUS
- BCBGMAXAZRIA
- SEPHORA
- Applebees
- FRIDAYS
- OUTBACK STEAKHOUSE
- Starbucks