

# MIDDLETOWN, CT

## 584 Main Street

### Former Shlein 's Furniture - 3,304 s.f.



FORMER SHLEIN'S FURNITURE STORE - 3,304 S.F.

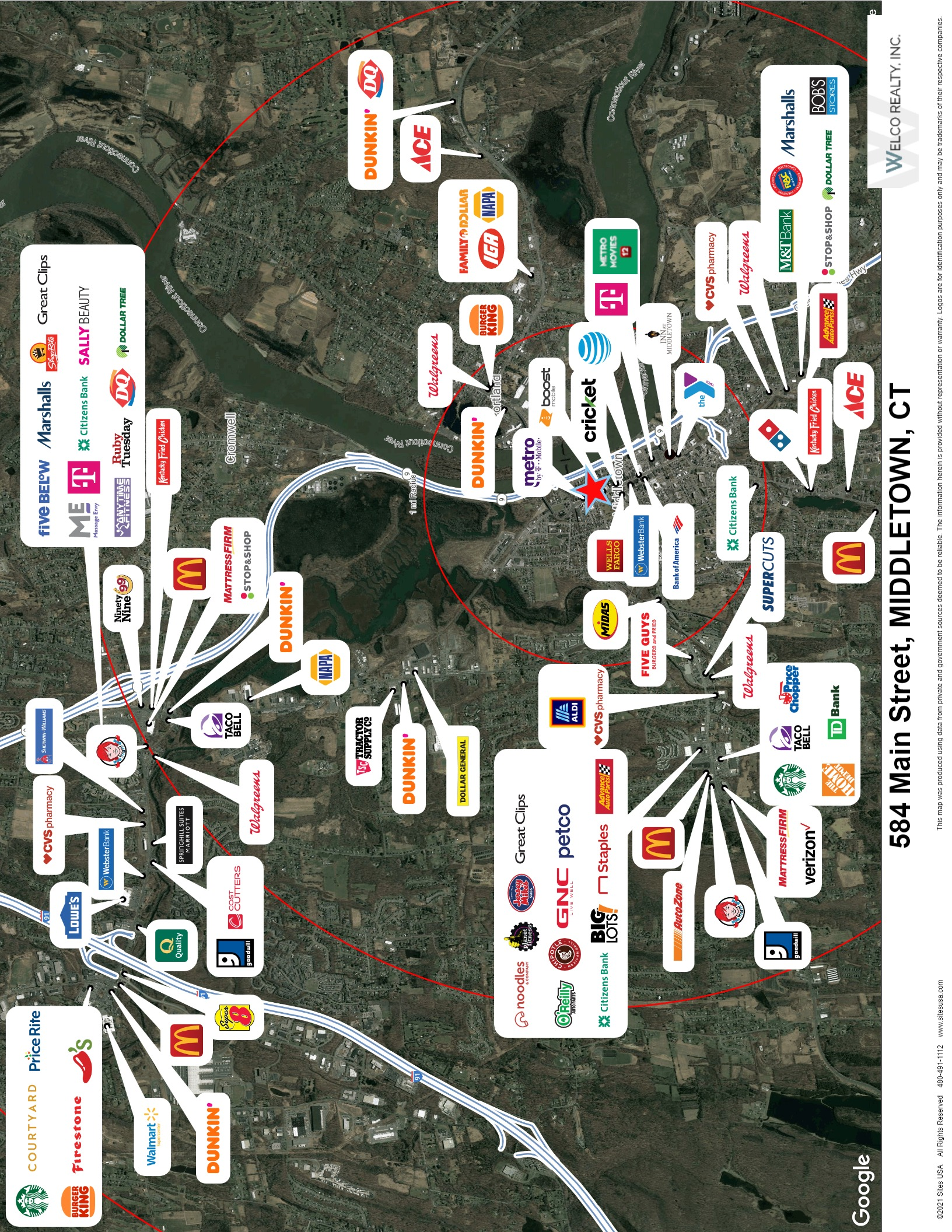
Middletown is a vibrant, diverse community, and they pride themselves on how much they have to offer to visitors and residents alike: great schools, a thriving economy strong neighborhoods, beautiful parks and open spaces, and an iconic downtown.

Demographics:	3 Miles	5 Miles
Population	43,316	74,186
Households	17,601	31,203
Average HH Income	\$ 89,043	\$ 99,117
Median Age	39.8	40.4

- New to Market
- Located in the "Downtown Business District"
- Easy on, easy off State Route 9 (Connects I-91, I-95 & I-84)
- Heavily trafficked downtown retail center.
- Build to Suit potential.







# 584 Main Street, MIDDLETOWN, CT