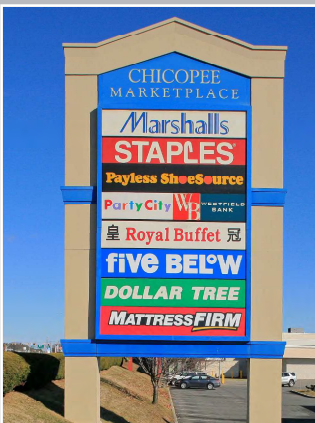


Chicopee, Massachusetts
591 Memorial Drive
Up to 14,510 s.f. Available

CHICOPEE, MASSACHUSETTS
Up to 14,510 s.f. Available

CHICOPEE MARKETPLACE

Suite	Tenant	SF
1	ROSS DRESS FOR LESS	23,922
2	AVAILABLE	14,510
3	AVAILABLE	14,510
4	Marshall's/HomeGoods	36,000
5	Spectrum	2,800
6	Five Below	7,200
7	Sally Beauty Supply	1,600
8	ATI Physical Therapy	3,551
9	Royal Chinese Buffet	6,932
10	Miami Nails	1,600
11	Plaza Liquors	2,900
12	Dollar Tree	12,000
13	GameStop ¹	1,600
14	Subway	1,200
15	Panera Bread	4,500
16	Wing Stop	1,500
17	Verizon	2,800
18	AT&T	2,500
19	Bath & Body Works	3,200
20	Playa Bowls	1,600
21	New England Family Dentistry	4,500
22	Westfield Bank	2,643
23	Dialysis Center of Western MA	6,745
24	Applebee's (Pad)	5,200
Total Occupied Area		158,003



Join Dollar Tree, Marshalls, HomeGoods, Five Below, Supercuts, Panera, Applebee's, Sally Beauty, New England Family Dentistry, GameStop, Subway & McDonald's.

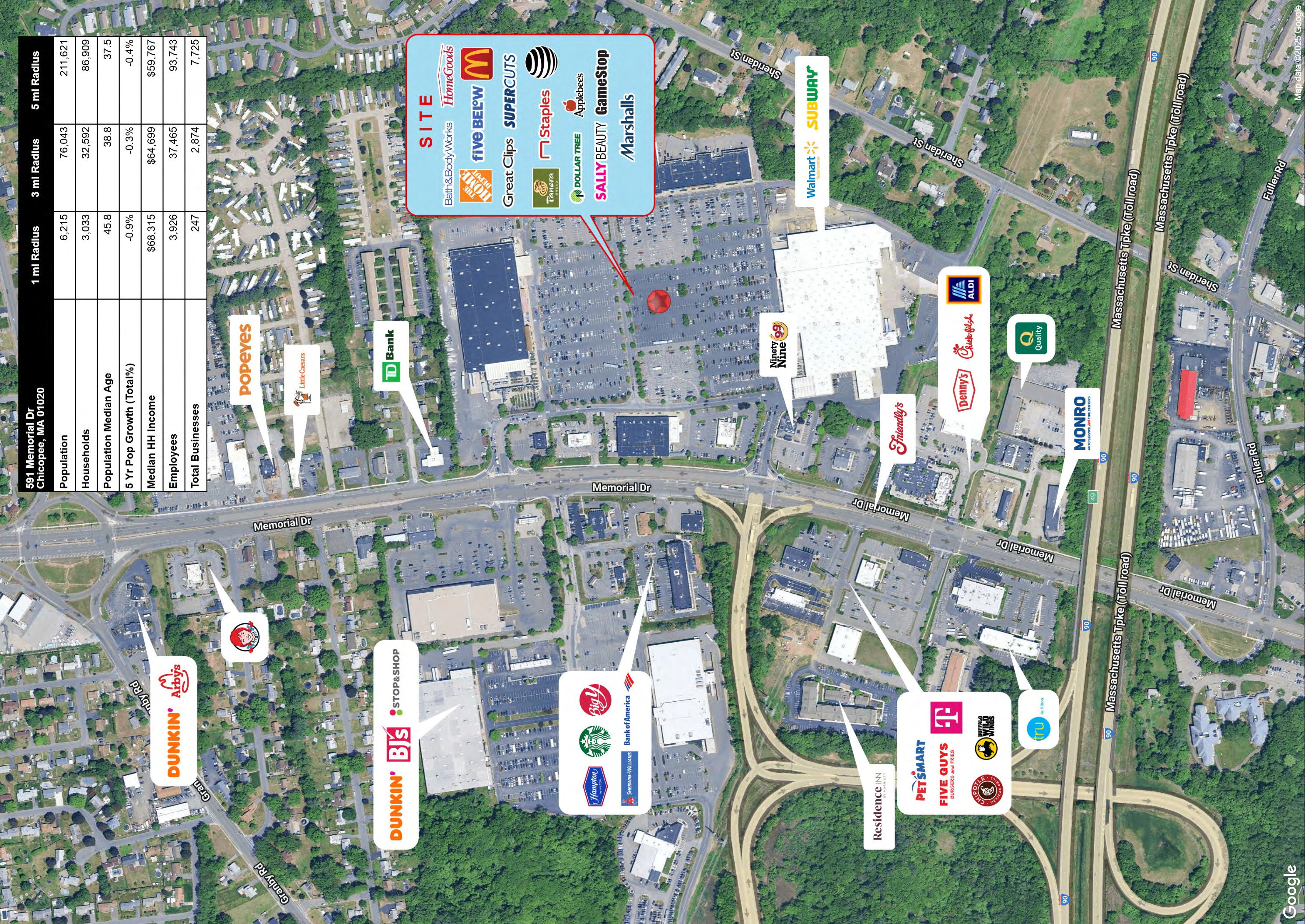
Co-tenants: Walmart, Home Depot, BJ's, Aldi, Stop & Shop, and Denny's.



WELCO REALTY, INC. • 2525 Palmer Avenue, New Rochelle, NY 10801 • T (914) 576-7500 / Fax: 7596 • www.welcorealty.com

All information is from sources believed reliable and has not been independently verified. No representation is made to the accuracy of information herein, which is subject to errors, omissions and modifications. Licensed in New York, New Jersey, Connecticut & Pennsylvania.

591 Memorial Dr Chicopee, MA 01020	1 mi Radius	3 mi Radius	5 mi Radius
Population	6,215	76,043	211,621
Households	3,033	32,592	86,909
Population Median Age	45.8	38.8	37.5
5 Yr Pop Growth (Total%)	-0.9%	-0.3%	-0.4%
Median HH Income	\$68,315	\$64,699	\$59,767
Employees	3,926	37,465	93,743
Total Businesses	247	2,874	7,725



SITE

Bath & Body Works

HomeGoods

five BELOW

McDonald's

Great Clips

SUPERCUTS

Staples

Applebees

SALLY BEAUTY

GameStop

Marshall's

591 Memorial Dr

Chicopee, MA 01020

February 2025

