

Located at the intersection of Washington Avenue & Little Road at a lighted intersection.



BELLEVILLE, NEW JERSEY

505 Washington Avenue

End Cap Location - 1,550 s.f. Available



Available: End cap location - 1,550 s.f. with 23 ft. frontage

Great visibility, excellent parking, densely populated middle class community.

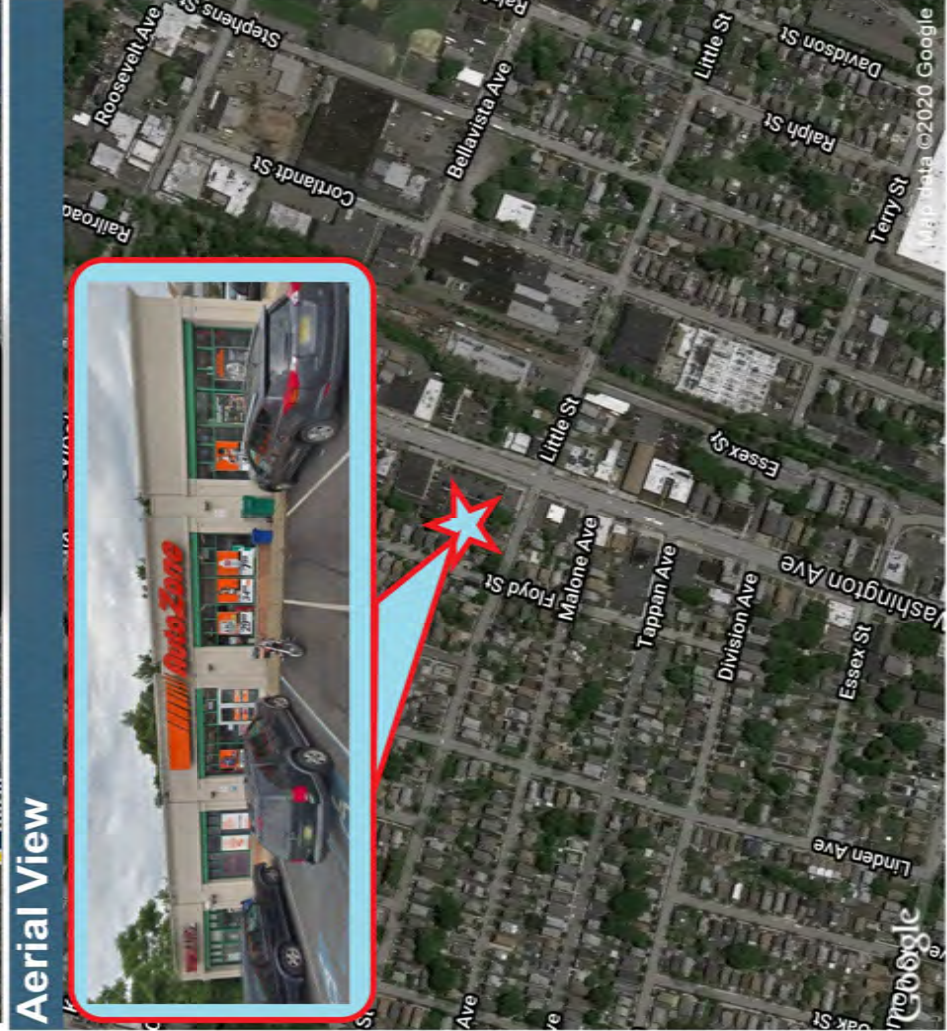
Join Quick Chek, CVS, & Auto Zone.



Demographics	3 miles	5 miles
Population	253,955	659,356
Households	99,137	252,201
Average HH Income	\$ 93,325	\$ 92,783
Median Age	37.6	36.6



Belleville, New Jersey - 505 Washington Ave



	3 mi radius	5 mi radius
Population	253,955	659,356
Households	99,137	252,201
Population Median Age	37.6	36.6
5 Yr Pop Growth (Total%)	0.6%	1.1%

5 Mile Information



Contact Information

Name **Jerry Welkis** Phone **914.576.7500**
 Email **jwelkis@welcorealty.com**

WELCO REALTY, INC.