

# WOODCLIFF LAKE, NJ

500 - 520 Chestnut Ridge Road  
PRIME RETAIL SPACE - Up to 10,400 s.f.

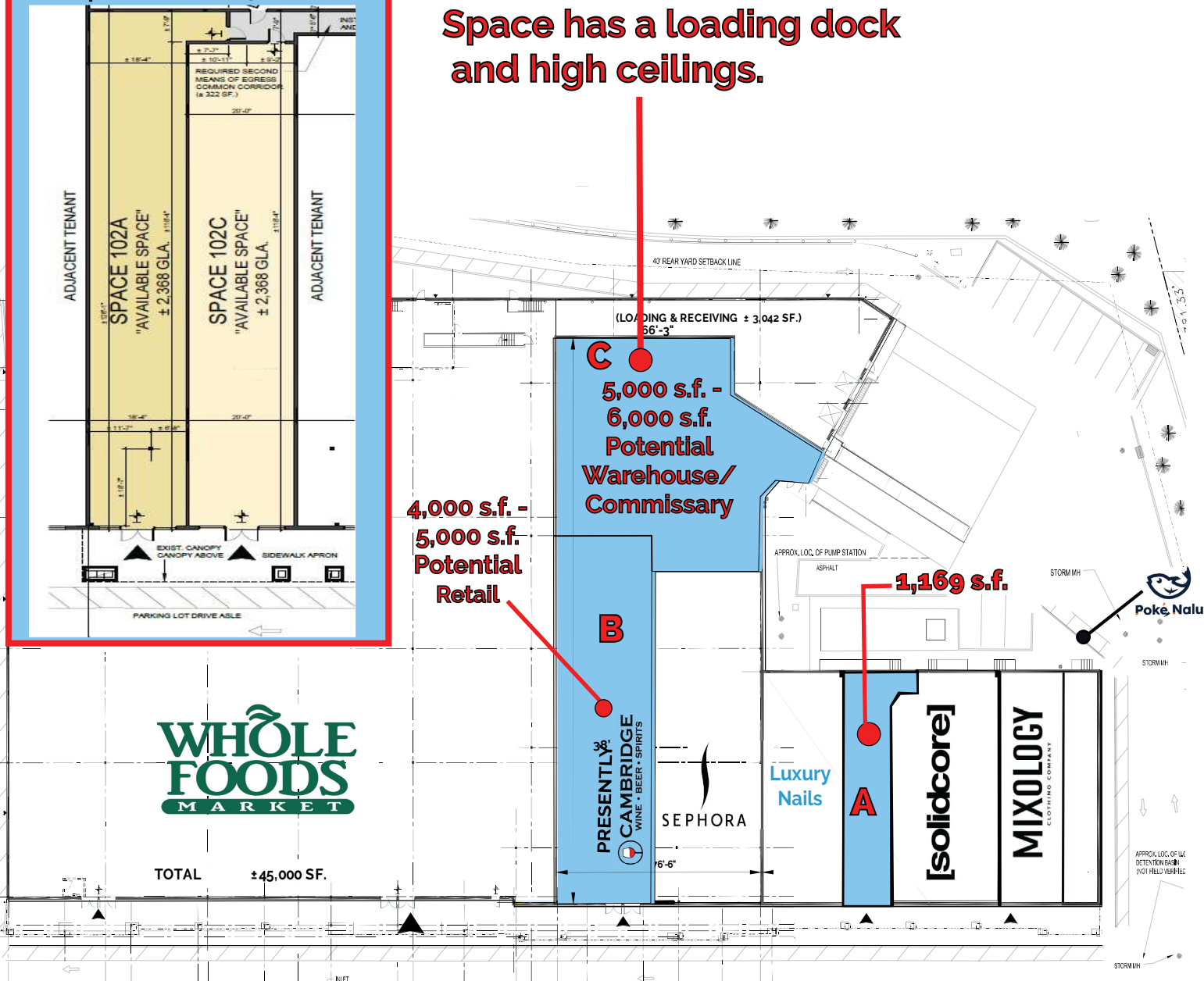
# WOODCLIFF LAKE, NJ

500 - 520 Chestnut Ridge Road  
PRIME RETAIL SPACE - Up to 10,400 S.F.



**B** - Can be divided into two retail spaces of +/- 2,368 s.f. each.

Space has a loading dock and high ceilings.



**AVAILABLE SPACES:**

- (A) 1,169 s.f. - presently Greg B. Jewelers
- (B) 4,000 s.f. - 5,000 s.f. potential retail (presently Cambridge Wines). Can be divided into two retail spaces consisting of 2,368 s.f. each
- (C) 5,000 s.f. - 6,000 s.f. potential warehouse / commissary with a loading dock & high ceilings.

Join Whole Foods, Luxury Nails, Mixology Clothing Company, Poke Nalu and Sephora.

- Across from Tices Corner Shopping Center.
- At a Signalized Intersection.

**Neighboring Tenants:**

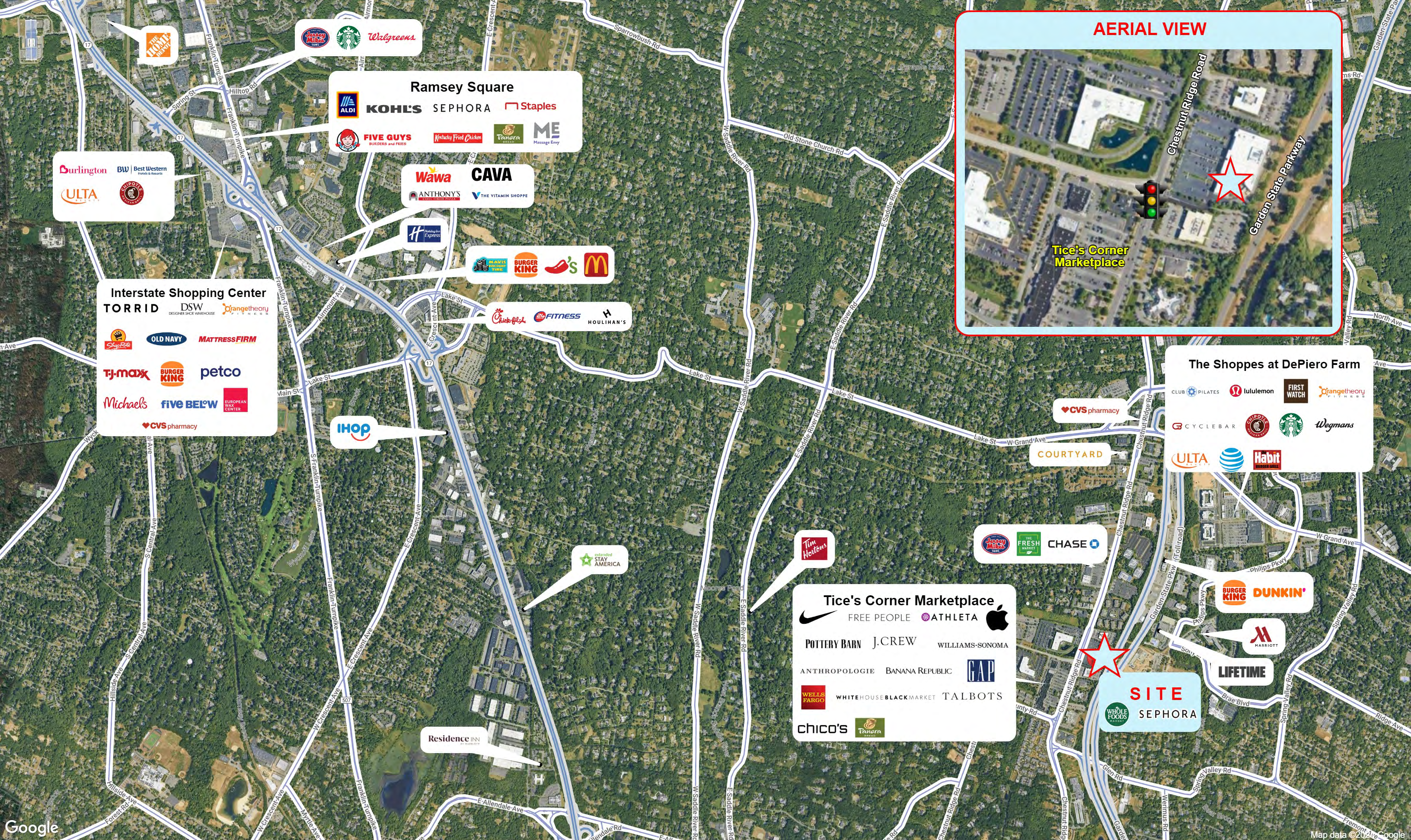
William Sonoma, Talbots, Victoria's Secret, Apple, Chico's, Banana Republic, Wegmans, Orange Theory & Starbucks.

Demographics	3 miles	5 miles
Population	57,100	219,233
Households	19,971	73,836
Average HH Income	\$ 245,039	\$ 224,044
Median Age	44.5	41.8

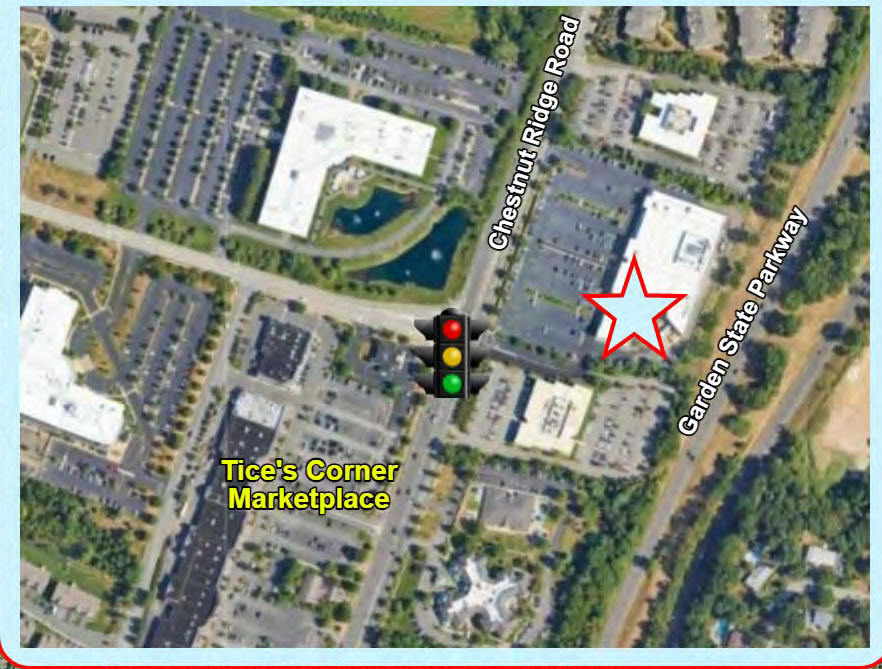


WELCO REALTY, INC. 2525 Palmer Avenue, New Rochelle, NY 10801 . T (914) 576-7500 / Fax: 7596 . [www.welcorealty.com](http://www.welcorealty.com)

All information is from sources believed reliable and has not been independently verified. No representation is made to the accuracy of information herein, which is subject to errors, omissions and modifications. Licensed in New York, New Jersey, Connecticut & Pennsylvania.



**AERIAL VIEW**



**Tice's Corner Marketplace**

**SITE**

**SEPHORA**

**Tice's Corner Marketplace**

NIKE FREE PEOPLE ATHLETA APPLE  
 POTTERY BARN J.CREW WILLIAMS-SONOMA  
 ANTHROPOLOGIE BANANA REPUBLIC GAP  
 WELLS FARGO WHITEHOUSEBLACKMARKET TALBOTS  
 CHICO'S Tanera

**The Shoppes at DePiero Farm**

CLUB PILATES lululemon FIRST WATCH Orangetheory FITNESS  
 CYCLEBAR CHIPOTE Starbucks Wegmans  
 ULTA AT&T Habit

**Ramsey Square**

ALDI KOHL'S SEPHORA Staples  
 FIVE GUYS Kentucky Fried Chicken Tanera ME  
 BURGERS and FRIES

**Interstate Shopping Center**

TORRID DSW Orangetheory FITNESS  
 ShopRite OLD NAVY MATTRESS FIRM  
 TJ-maxx BURGER KING petco  
 Michaels FIVE BEL'W EUROPEAN WAX CENTER  
 CVS pharmacy

Burlington BW Best Western  
 ULTA CHIPOTE

Wawa CAVA  
 ANTHONY'S THE VITAMIN SHOPPE

BURGER KING P.F. Chang's MCDONALD'S

Chick-fil-ee FITNESS HOULIHAN'S

IHOP

extended STAY AMERICA

Tim Hortons

Chipotle THE FRESH MARKET CHASE

BURGER KING DUNKIN'

MARRIOTT

LIFETIME

WHOLE FOODS MARKET SEPHORA

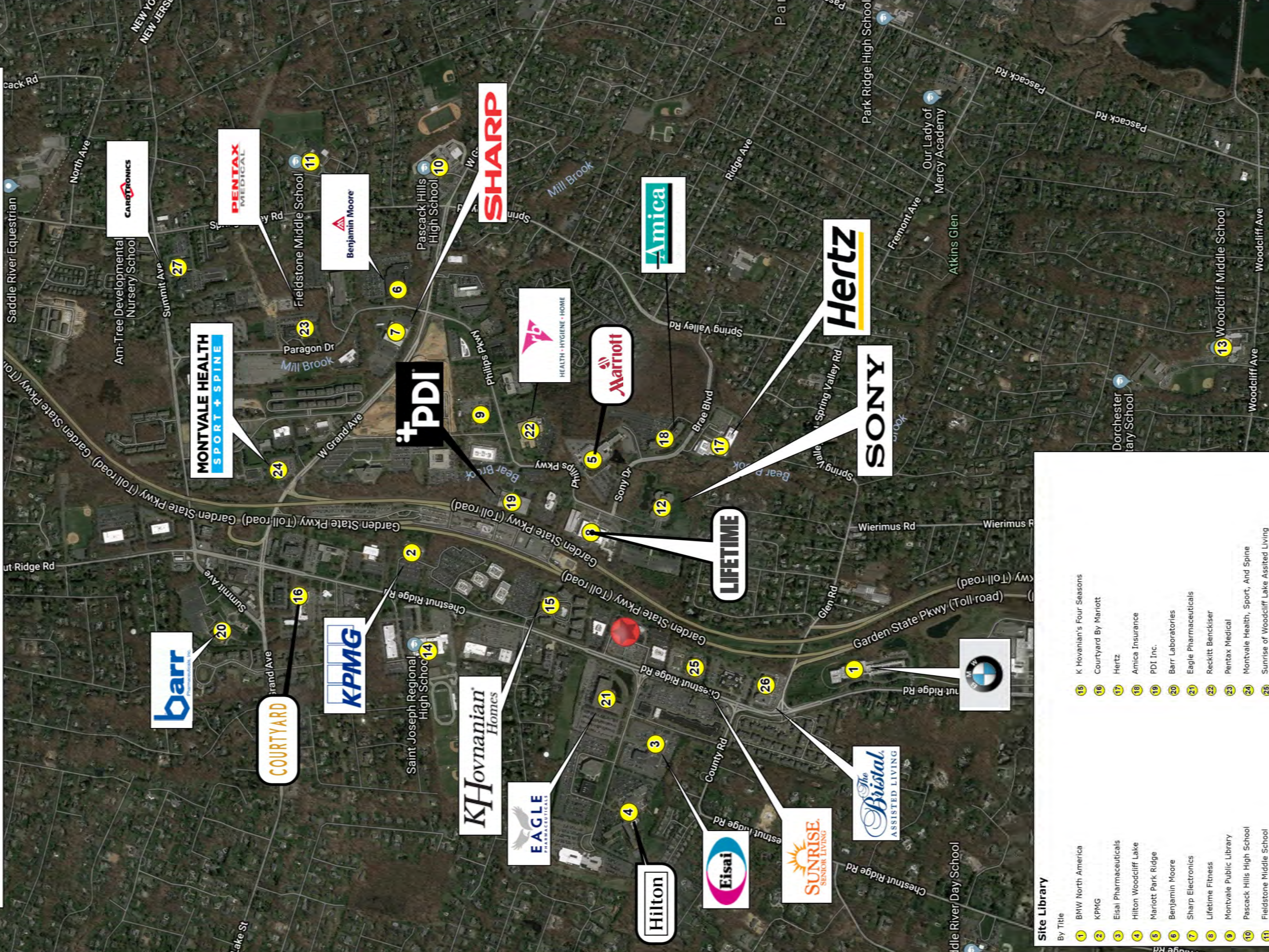
Residence INN

**500 Chestnut Ridge Rd, Woodcliff Lake, New Jersey**

July 2024



# Woodcliff Lake Trade Area Businesses



## Site Library

- | By Title                             | By Title   |
|--------------------------------------|--|
| 1 BMW North America                  | 15 K Hovanian's Four Seasons                     |
| 2 KPMG                               | 16 Courtyard By Marriott                         |
| 3 Eisai Pharmaceuticals              | 17 Hertz   |
| 4 Hilton Woodcliff Lake              | 18 Amica Insurance                               |
| 5 Marriott Park Ridge                | 19 PDI Inc.                                      |
| 6 Benjamin Moore                     | 20 Barr Laboratories                             |
| 7 Sharp Electronics                  | 21 Eagle Pharmaceuticals                         |
| 8 Lifetime Fitness                   | 22 Reckitt Benckiser                             |
| 9 Montvale Public Library            | 23 Pentax Medical                                |
| 10 Pascoack Hills High School        | 24 Montvale Health, Sport, And Spine             |
| 11 Fieldstone Middle School          | 25 Sunrise of Woodcliff Lake Assisted Living     |
| 12 Sony Electronics                  | 26 The Bristol Assisted Living at Woodcliff Lake |
| 13 Woodcliff Middle School           | 27 Cardtronics                                   |
| 14 Saint Joseph Regional High School |  |