



AVAILABLE SUMMER 2024



**RETAIL  
OPPORTUNITY  
1,100 SF**



**HARBOR**  
1500  
234 UNITS

TH ST - 6 MINUTES BY FERRARI

Hamilton Cove  
521 UNITS

**NOW LEASING**



HOBOKEN  
POINT  
261 UNITS

HOBOKEN

**OVER 2,107 RESIDENTIAL UNITS IN LINCOLN HARBOR WITH 4,250 RESIDENTS WHEN COMPLETE**



**2525 Palmer Avenue, New Rochelle, NY 10801**  
**Ph: 914.576.7500 • Fax: 914.576.7596**  
**jwelkis@welcorealty.com • www.welcorealty.com**

THIS PROPERTY IS A  
HARTZ MOUNTAIN  
DEVELOPMENT



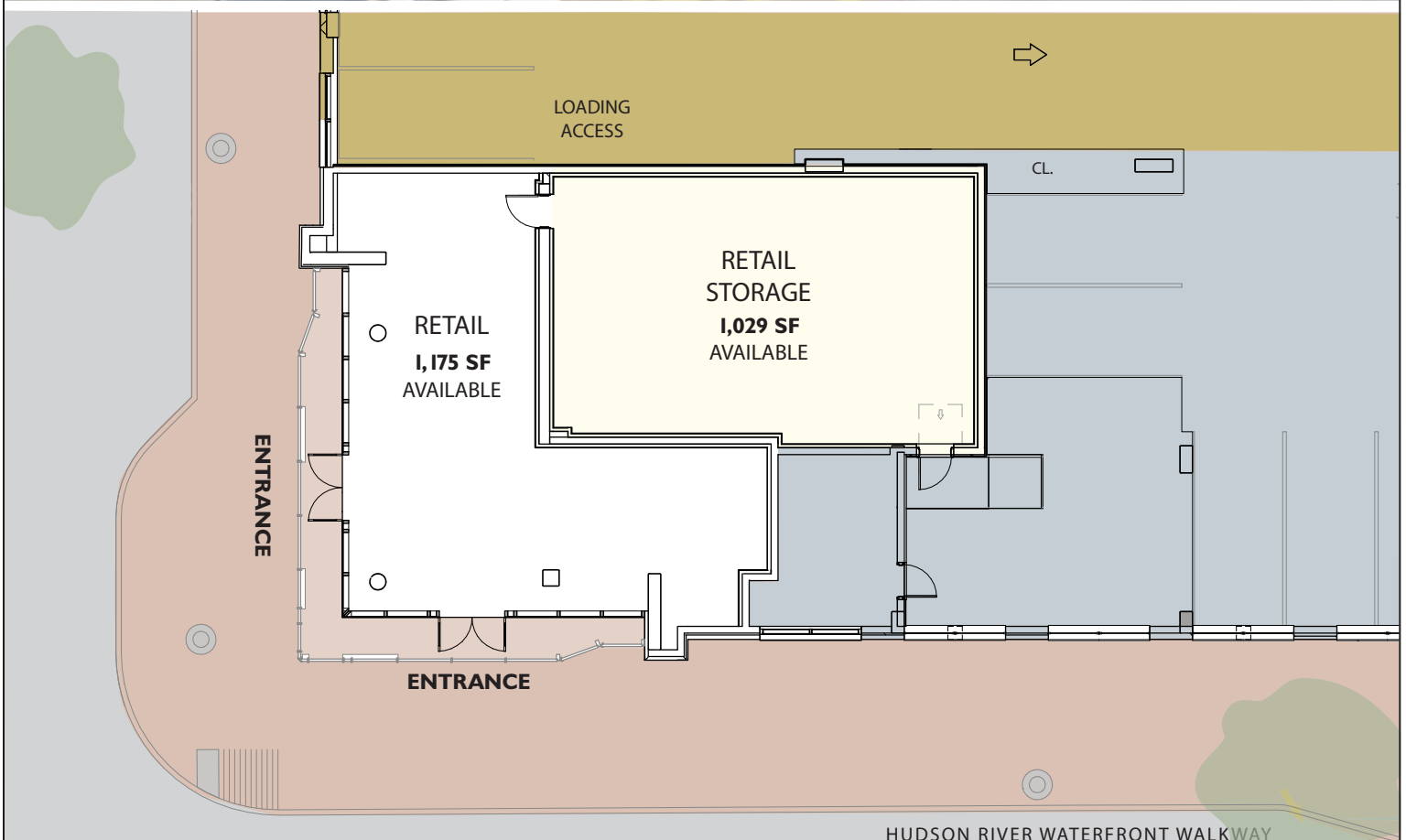
**RETAIL OPPORTUNITY • 1,175 SF**

**Unit has 1,029 SF of Storage Space**

**ESTUARY, 1600 Harbor Blvd, Weehawken, NJ**

Prime Location in a Hudson River Waterfront Development

**AVAILABLE SUMMER 2024**



## MAP OF LINCOLN HARBOR

**BLU ON THE HUDSON**

**ESTUARY**

Lincoln Harbor is a Hudson River Waterfront Community located in Weehawken, NJ

