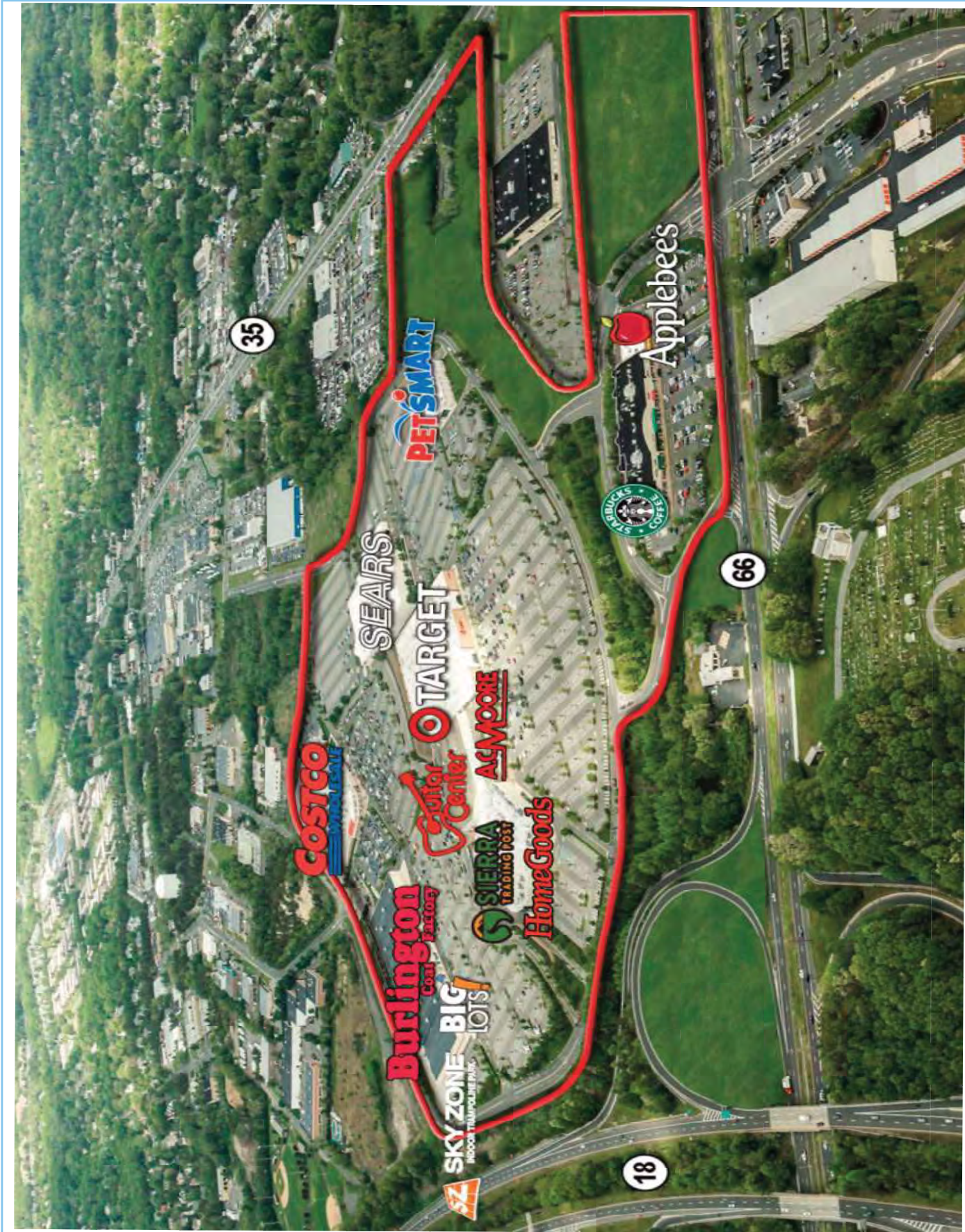


OCEAN TOWNSHIP - Seaview Square Shopping Center



OCEAN TOWNSHIP, NJ

Seaview Square Shopping Center

Route 66, Route 35 & Route 18



Available: 1,700 - 35,179 s.f. (2 Level Space with Escalator & Elevator)

Seaview Square Shopping Center consists of approximately 1.1 million s.f. of retail space located at the junction of the region's three major routes (18, 65 & 35) in Ocean Township, Monmouth County, New Jersey.

JOIN THESE FINE RETAILERS:

Demographics	2 miles	3 miles	5 miles
Population	44,158	91,680	148,120
Households	17,637	39,576	62,339
Average HH Income (2016)	\$ 86,526	\$ 85,511	\$ 92,257
Average HH Income (Proj. 2021)	\$102,644	\$101,331	\$109,769
Median Age	38.8	40.7	40.0



Seaview Square Shopping Center Ocean Township, NJ - Route 35, Route 66 & Route 18



TENANT LIST

FRONT RETAIL STRIP		
1	STARBUCKS	3,500 S.F.
2	GAME STOP	1,725 S.F.
3	GREAT CLIPS	1,627 S.F.
4	TIKI TANNING	3,500 S.F.
5	BAJA FRESH	3,434 S.F.
6	HARMON DISCOUNT	6,450 S.F.
7	DOLLAR TREE	9,088 S.F.
8	FIVE GUYS	3,175 S.F.
9	H&R BLOCK	2,277 S.F.
10	SLEEPY'S	5,120 S.F.
11	SUBWAY	1,795 S.F.
12	VACANT	1,700 S.F.
13	APPLEBEE'S	6,314 S.F.
MIDDLE RETAIL STRIP		
13A	TO BE BUILT	20,000 S.F.
14	HOMEGOODS / SIERRA	43,000 S.F.
TRADING POST - NOW OPEN		
15	GUITAR CENTER	13,400 S.F.
16	AC MOORE	18,531 S.F.
17	VACANT *	16,846 S.F.
18	HAND & STONE	2,573 S.F.
19	WOW GYM	30,000 S.F.
20	VACANT *	18,333 S.F.
21	TARGET	148,700 S.F.
22	PETSMART	20,087 S.F.
23	SEARS	
BACK RETAIL STRIP		
24	SKY ZONE	38,000 S.F.
25	BIG LOTS	41,952 S.F.
26	BURLINGTON	80,000 S.F.
27	COSTCO	148,663 S.F.

* Space # 17 - 16,846 s.f. grade level
 Space # 20 - 18,333 s.f. upper level retail with escalator & elevator.
 Can be combined for a total of 35,179 s.f. or leased separately.

- Vacant
- Critical Area
- Medical / Day Care / Beauty / Nails / Lab / Gov't Offices Permitted Area