

Bensonhurst (Bklyn, NY)



6401 18th Avenue

Up to 22,000 sf Available

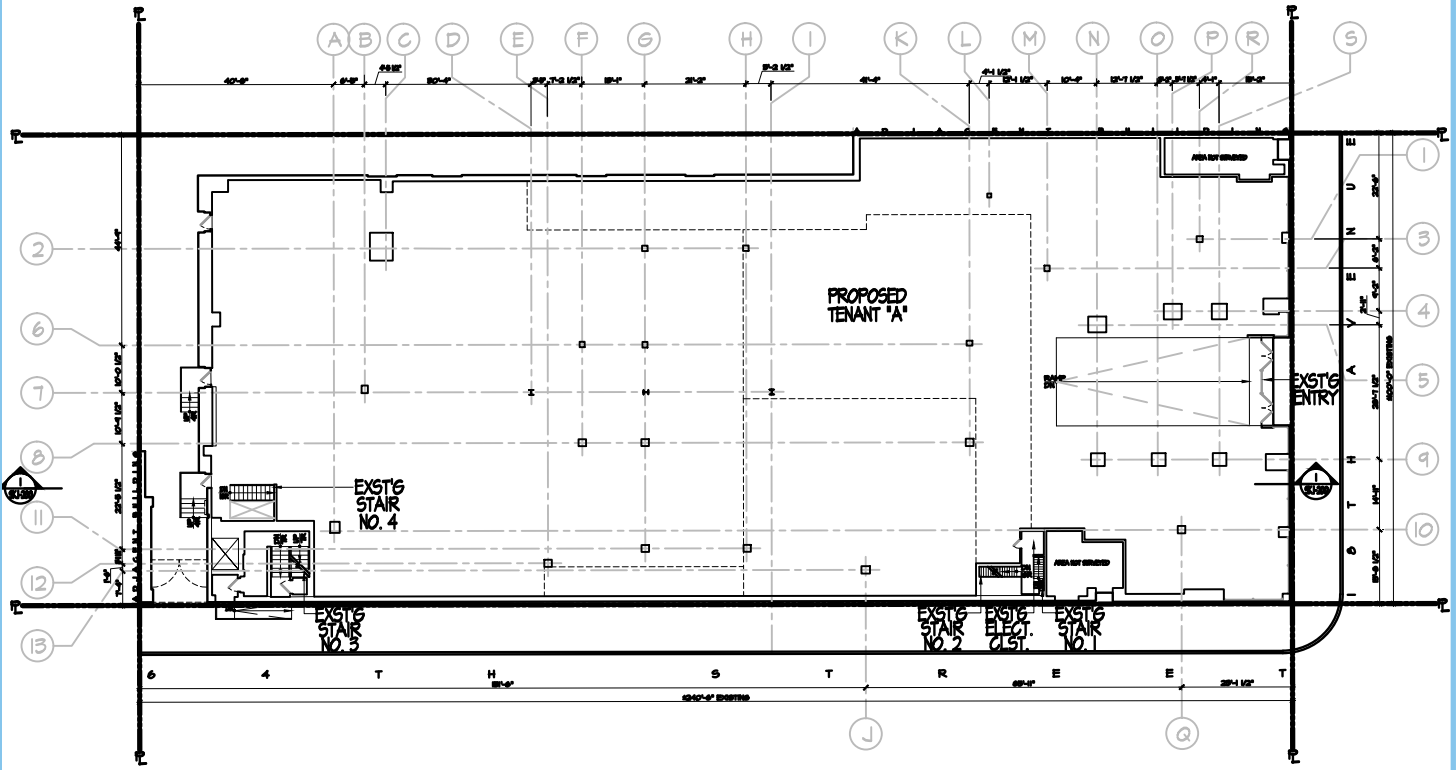


Location: Prime retail corner. Presently Annie Sez / Mandee store.
Premises: Up to 22,000 s.f. available - Divisible.
Availability: March 2016
Nearby Tenants: Telco Discount Stores, Dunkin Donuts, Capital One, Chase, CVS, Walgreen's, C-Town Supermarkets, Starbucks, McDonald's, Apple Bank, Capital One, Bank of America, Citibank, Santander, Petland, Fabco Shoes, Payless Shoe Source, Red Mango, GameStop & Radio Shack.





Option A: Single tenant - 22,000 s.f.



Option B: Two tenants - 11,054 s.f. & 9,390 s.f.

