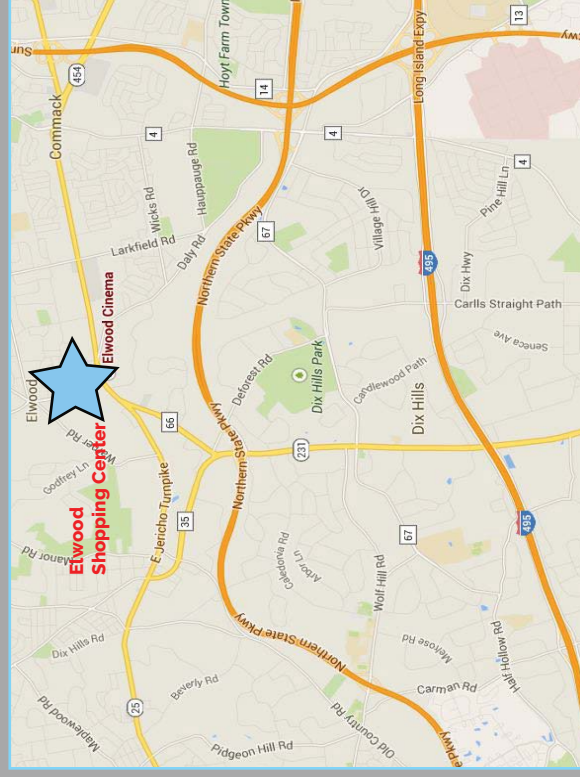
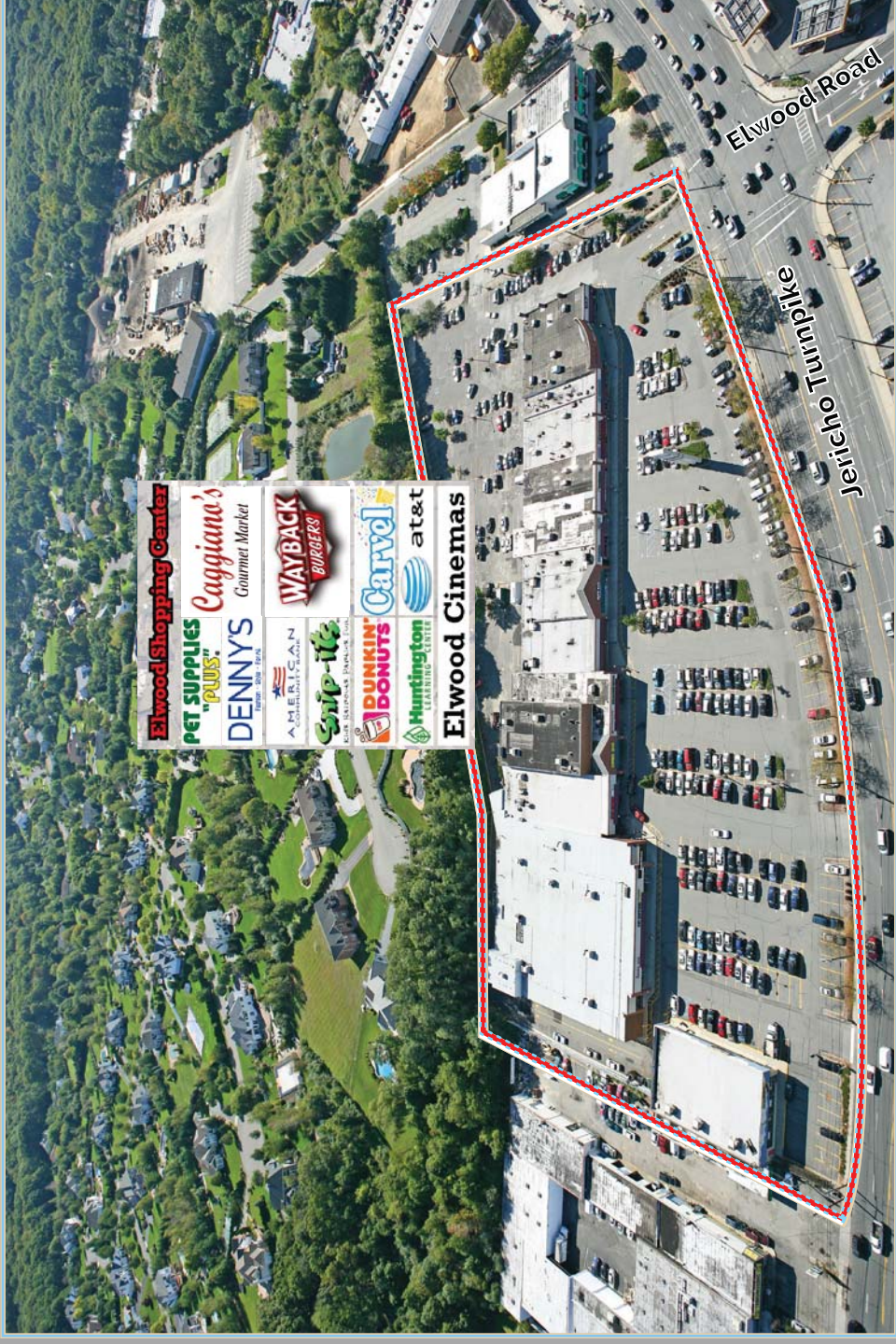


Elwood Shopping Center Jericho Turnpike East Northport, New York

East Northport, NY Elwood Shopping Center Up to 14,903 s.f. Available



Demographics	1 mile	3 miles	5 miles
Population	6,278	82,451	215,594
Households	1,983	24,308	69,935
Average HH Income	\$137,140	\$115,973	\$110,962
Median Age	39.7	40.0	38.8

Available: 1,500 s.f./1,906 s.f./ 14,903 s.f.

Major Tenants:

Elwood Cinema, Pet Supplies Plus, Dunkin Donuts, Huntington Learning Center, Caggiano's Gourmet Market, Jake's Hamburgers, True North Urgent Care & Carvel.

Parking: 425 parking spaces

Owner:



TRECOCO



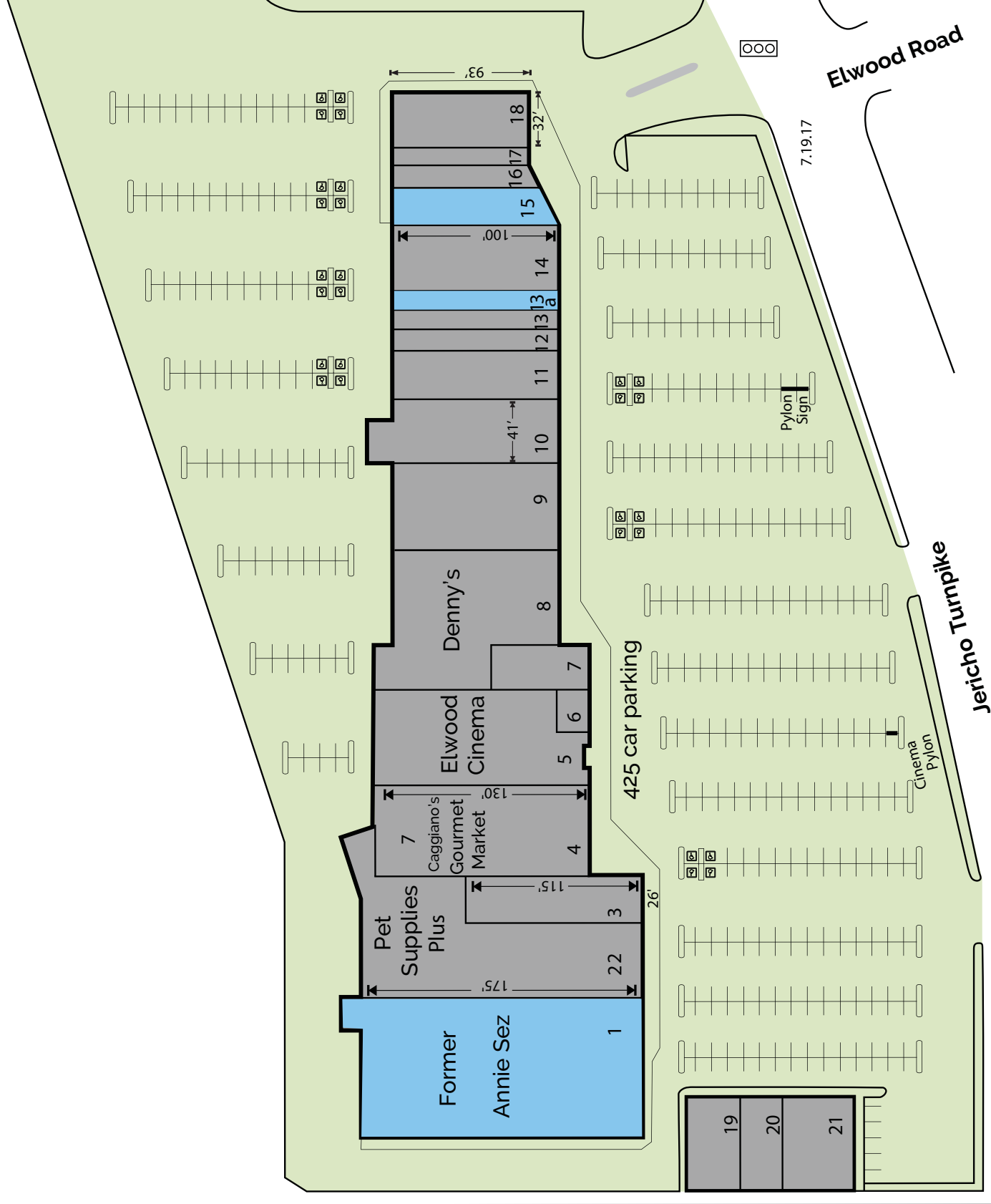
East Northport / Commack, New York

Elwood Shopping Center - Jericho Turnpike



Tenants

1.	Available (former Annie Sez)	14,903 sf
2.	Pet Supplies Plus	10,300 sf
3.	Victoria Nail & Spa	3,000 sf
4.	Caggiano's Gourmet Market	6,500 sf
5.	Elwood Cinema	7,560 sf
6.	GLM Wireless	600 sf
7.	Dunkin Donuts	1,485 sf
8.	Denny's	7,500 sf
9.	Hibachi	5,500 sf
10.	Graffiti	4,100 sf
11.	Huntington Learning Center	3,000 sf
12.	Nu-Clear Cleaner/Tailor	1,100 sf
13.	Lonny's	1,500 sf
13a.	AVAILABLE	1,500 sf
14.	First Class Bagels	4,000 sf
15.	AVAILABLE	1,906 sf
16.	Carvel	1,380 sf
17.	Goldline Jewelry	870 sf
18.	True North Urgent Care	2,975 sf
19.	Jake's Hamburgers	2,015 sf
20.	Snip-its	1,500 sf
21.	American Community Bank	3,003 sf



This site plan is for location purposes only
Dimensions are approximate. Not to scale.

AVAILABLE -

Location

Jericho Turnpike & Elwood Road
off of Deer Park Road
East Northport,
Suffolk County, New York

Access

Jericho Turnpike,
Long Island Expressway,
Northern State Parkway

Type

Neighborhood
Shopping Center

Parking

425 Spaces

GLA

86,000 ± Square Feet

- The Township of Huntington, with its beautiful beaches and waterways, quaint villages and thriving business and retail community, is home to more than 190,000 people.
- More than 45,000 people work in the area for such major companies as Bank of America, Nikon, Estee Lauder, General Accident Insurance, Underwriters Lab, Newsday and many more.
- Jericho Turnpike (car traffic count of approximately 40,000) runs east/west and is lined with shops, national chains, department stores, discount stores and restaurants.
- Elwood Shopping Center, newly renovated, is strategically located as the first retail center on the east-bound side of Jericho Turnpike at Elwood Road.