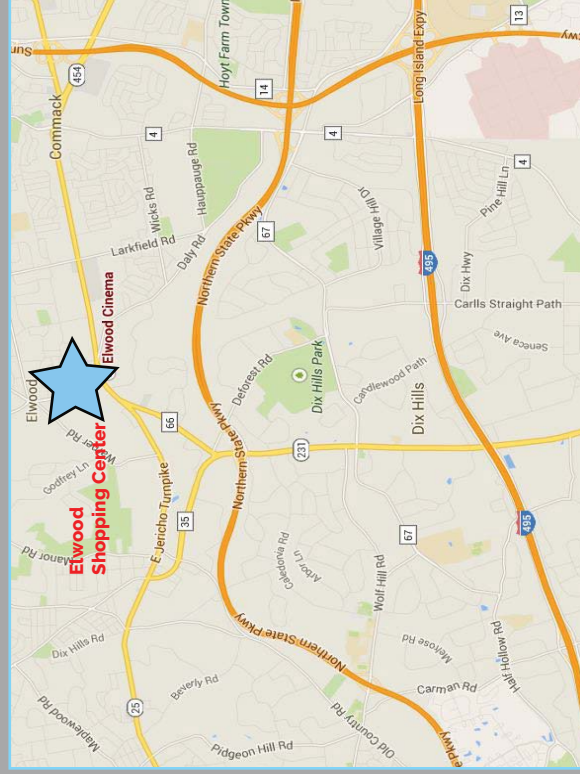
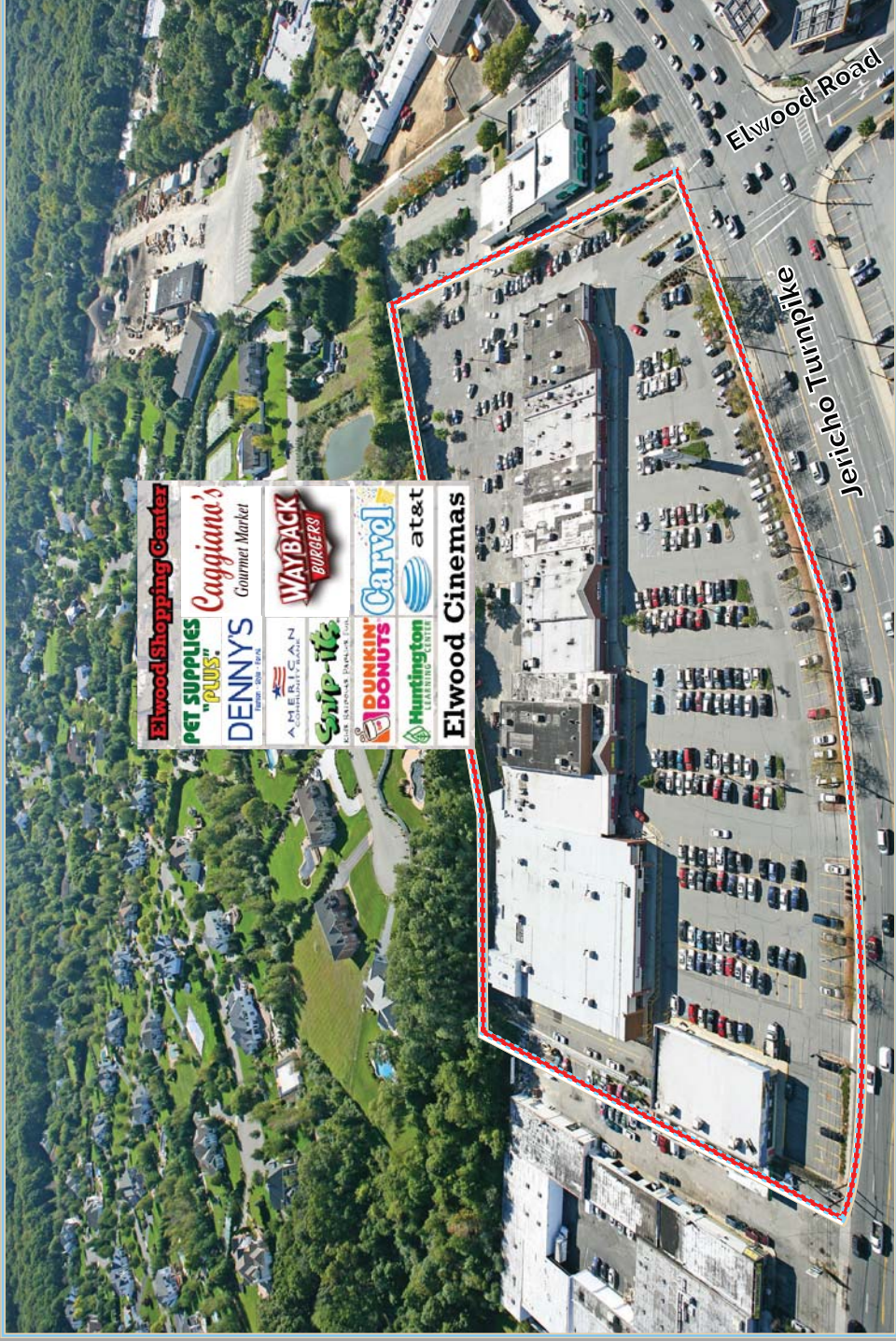


Elwood Shopping Center Jericho Turnpike East Northport, New York

East Northport, NY Elwood Shopping Center Up to 25,203 s.f. Available



| Demographics | 1 mile | 3 miles | 5 miles |
|-------------------|-----------|-----------|-----------|
| Population | 6,278 | 82,451 | 215,594 |
| Households | 1,983 | 24,308 | 69,935 |
| Average HH Income | \$137,140 | \$115,973 | \$110,962 |
| Median Age | 39.7 | 40.0 | 38.8 |

Available: 870 s.f./10,300 s.f./ 14,903 s.f.

Major Tenants: Elwood Cinema, Pet Supplies Plus, Dunkin Donuts, Huntington Learning Center, Caggiano's Gourmet Market, Jake's Hamburgers, True North Urgent Care & Carvel.

Parking: 425 parking spaces



TRECOCO

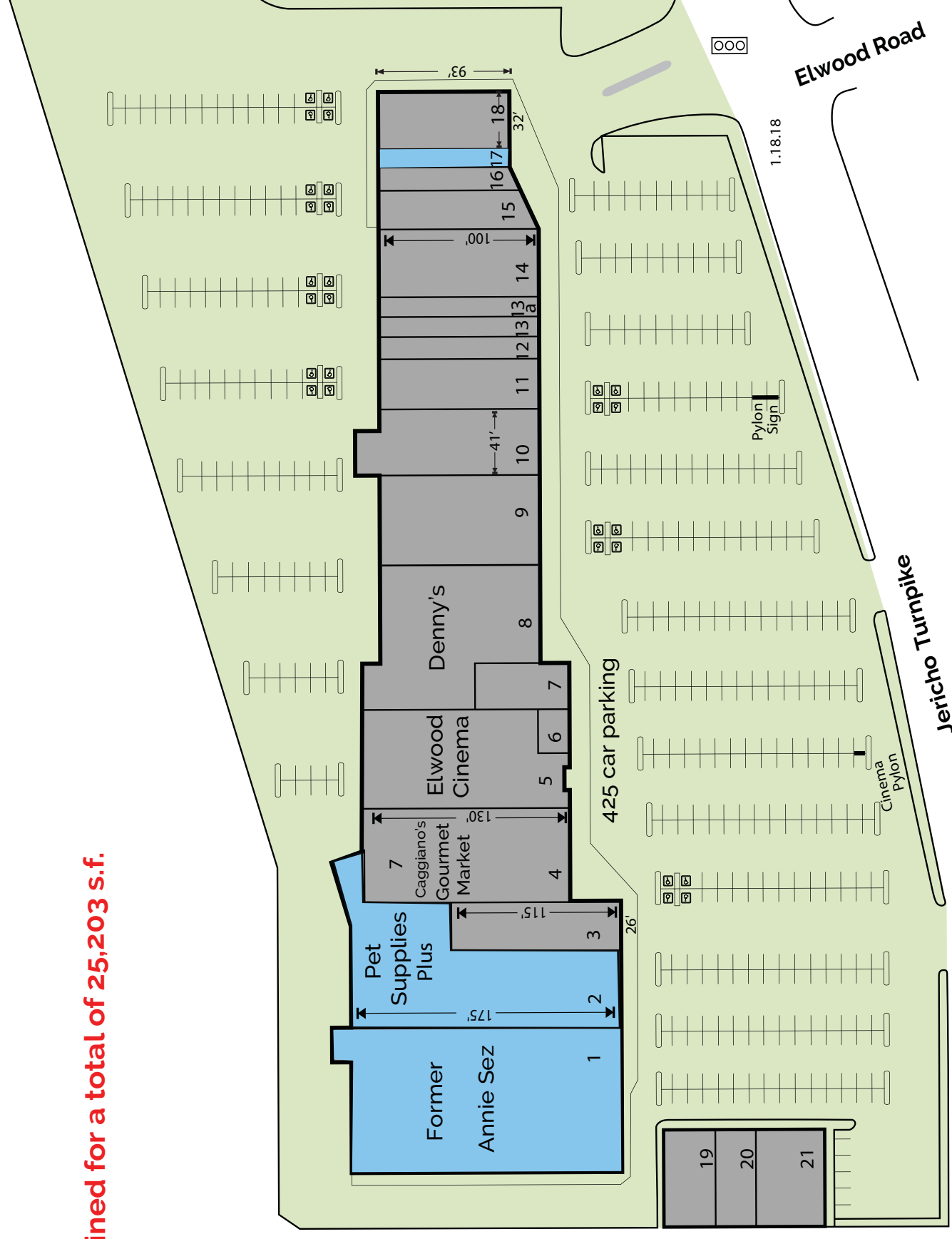
East Northport / Commack, New York

Elwood Shopping Center - Jericho Turnpike



Spaces 1 & 2 can be combined for a total of 25,203 s.f.

| Tenants | |
|--|-----------|
| 1. Available (former Annie Sez) | 14,903 sf |
| 2. Pet Supplies Plus (Can be made Available) | 10,300 sf |
| 3. Victoria Nail & Spa | 3,000 sf |
| 4. Caggiano's Gourmet Market | 6,500 sf |
| 5. Elwood Cinema | 7,560 sf |
| 6. GLM Wireless | 600 sf |
| 7. Dunkin Donuts | 1,485 sf |
| 8. Denny's | 7,500 sf |
| 9. Hibachi | 5,500 sf |
| 10. Graffiti | 4,100 sf |
| 11. Huntington Learning Center | 3,000 sf |
| 12. Nu-Clear Cleaner/Tailor | 1,100 sf |
| 13. Lonny's | 1,500 sf |
| 13a. Blow Me Away | 1,500 sf |
| 14. First Class Bagels | 4,000 sf |
| 15. Pico Tequila | 1,906 sf |
| 16. Carvel | 1,380 sf |
| 17. AVAILABLE | 870 sf |
| 18. True North Urgent Care | 2,975 sf |
| 19. Jake's Hamburgers | 2,015 sf |
| 20. Snip-its | 1,500 sf |
| 21. American Community Bank | 3,003 sf |



This site plan is for location purposes only
Dimensions are approximate. Not to scale.

AVAILABLE -

| Location | Access | Type | Parking | GLA |
|--|--|---------------------------------|------------|----------------------|
| Jericho Turnpike & Elwood Road off of Deer Park Road East Northport, Suffolk County, New York | Jericho Turnpike, Long Island Expressway, Northern State Parkway | Neighborhood Shopping Center | 425 Spaces | 86,000 ± Square Feet |

- The Township of Huntington, with its beautiful beaches and waterways, quaint villages and thriving business and retail community, is home to more than 190,000 people.
- More than 45,000 people work in the area for such major companies as Bank of America, Nikon, Estee Lauder, General Accident Insurance, Underwriters Lab, Newsday and many more.
- Jericho Turnpike (car traffic count of approximately 40,000) runs east/west and is lined with shops, national chains, department stores, discount stores and restaurants.
- Elwood Shopping Center, newly renovated, is strategically located as the first retail center on the east-bound side of Jericho Turnpike at Elwood Road.